

www.bigmould.cn



成为一流的车灯模具制造商



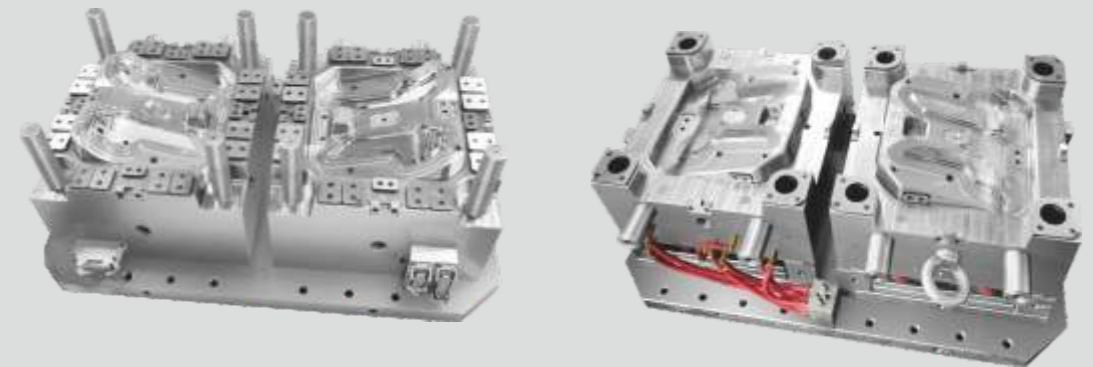
JIN XIANG SHENG MOULD
ENGAGED IN AUTO LAMP MOULD MANUFACTURING



台州金祥晟模塑有限公司

Taizhou Jinxiangsheng Moulds & Plastics Co., Ltd

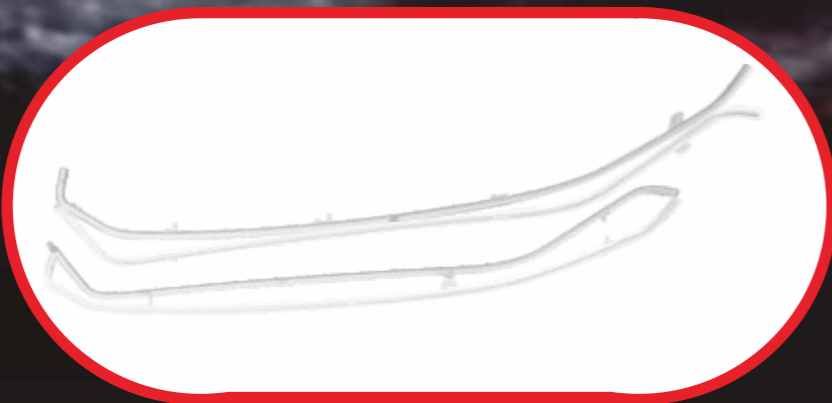
地址：浙江黄岩新前工业区茂丰街22号
Add : No.22 Maofeng Street,xinqian Industrial
Zone,Huangyan,Zhejiang,China
Tel : +86-576-84017688
Fax : +86-576-84351377
E-mail : jxsmould88@163.com
info@bigmould.cn
Website : www.bigmould.cn
www.jxs-mould.com



台州金祥晟模塑有限公司
Taizhou Jinxiangsheng Moulds & Plastics Co., Ltd

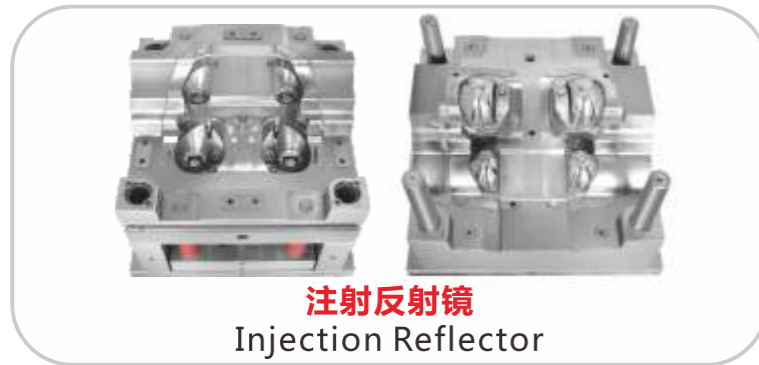
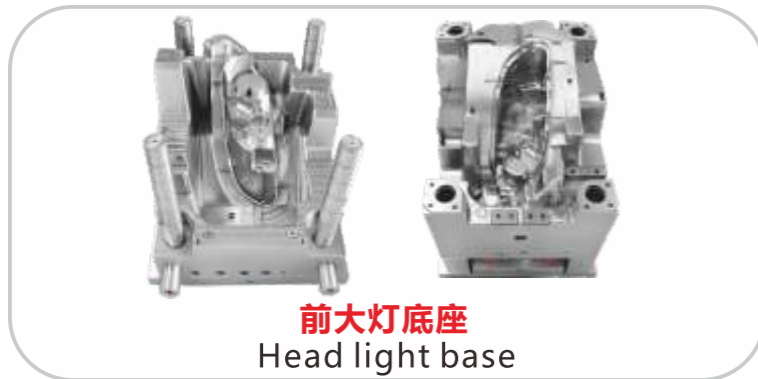
AUTO MOULD MAKER

投身汽车模具事业
为汽车产业贡献力量



MOULD GALLERY

模具展示



PROFILE

企业简介



ISO 9001 2008 Certified
ISO 9001 2008 质量体系认证
European standards
欧洲制作标准

公司自2002起一直专注于汽车模具制造事业。

公司专业从事产品外观设计、模具设计制造、塑料制品生产，尤其擅长于汽车车灯产品的正向设计和汽车前大灯模具（双色前大灯灯罩、双色尾灯罩、三色三工位尾灯罩模具）。日用品模具、家电模具、工业类产品模具、电摩产品模具制造。

我们长期为长春一汽、东风二汽、安徽江淮、广汽汽车、北汽汽车、北汽福田汽车等国内主机厂制造汽车前后灯具内外饰件、前后保险杠等其他塑件模具。具有设计、制造此类产品和模具的丰富经验和成熟技术。

公司拥有完善的模具加工设备及专业的技术工程团队，已通过ISO9001:2008质量管理体系认证，

我们秉承“诚信、和谐、创新、卓越共赢”的企业宗旨。

不断创新与完善中的金祥晟将以更强的实力、更大的信心，致力于成为一流的车灯模具专业企业！

Specialized in auto molds manufacturing since 2002.

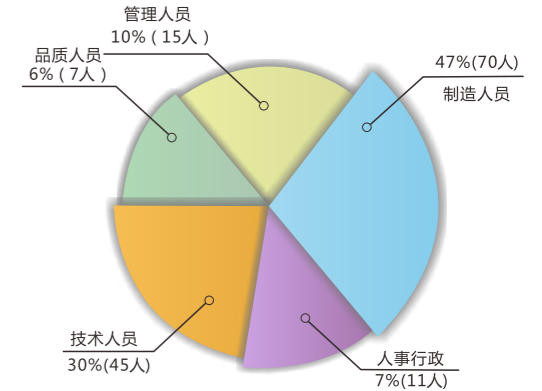
Dedicated in plastic parts design, mold designing/manufacturing, plastics production, especially good at Ordinal Design of auto lamp and manufacturing of auto front headlamp molds(dual-color headlamp cover, dual-color tail-light cover, tricolor tail-light cover molds), also engaged in manufacturing of molds and plastic parts in daily-necessity, domestic appliance, scooter and motorcycle industries.

Thanks to our extensive experience and proven technologies, we have long been tier-one supplier of car front/rear lamp parts, front/rear bumper molds for those leading car makers in China ranging from Changchun FAW, Dongfeng Motor, Anhui Jianghuai, GAC to BAIC MOTOR and BAIC Foton

At Jinxiangsheng, leading-edged technicians operate state-of-the-art mold machining equipment under an ISO9001 : 2008 certified quality management system.

Our motto: Integrity, harmony, innovation and win-win

Jinxiangsheng is committed to constant innovation and improving, and aimed to be a leader in car lamp mold industry with proven expertise and full confidence.

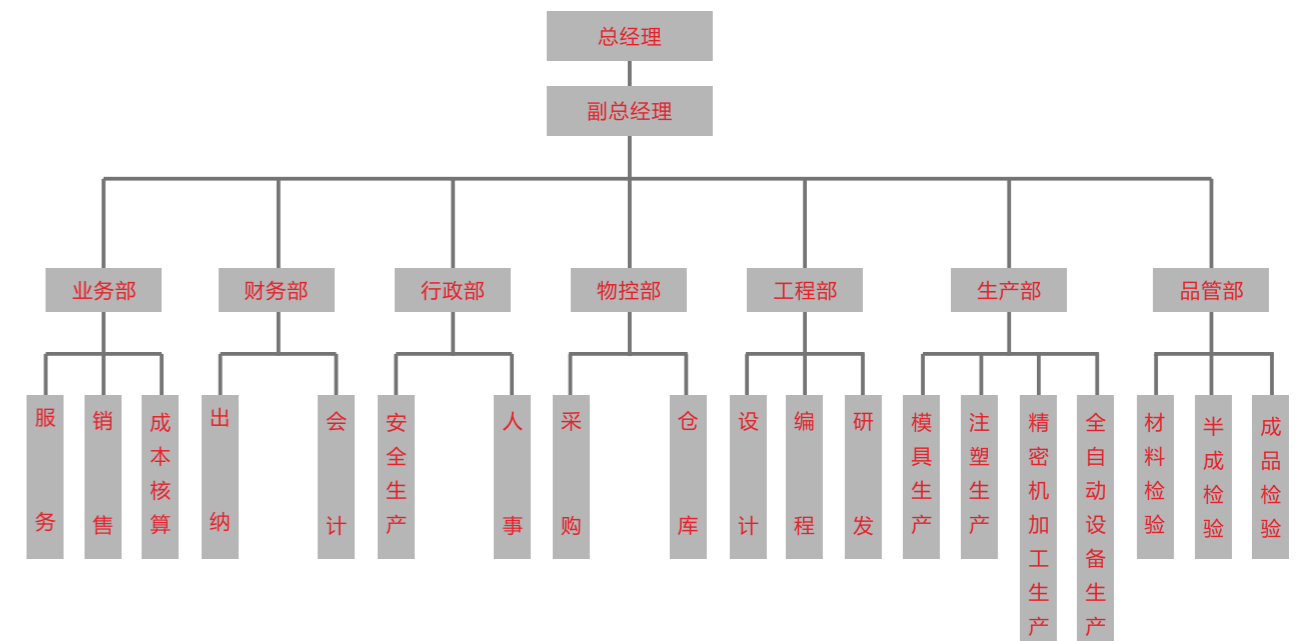


金祥晟拥有一支稳定、团结、上进的模具设计工程师队伍，公司以卓越的品质理念聚集了一批优秀的模具工程人员，在公司服务超过十年的工程师比比皆是，工匠精神是我们不变的信仰。

We have a stable,unitive and progressive mold designer team and prominent mold engineers team. Many veteran engineers have worked at Jinxiangsheng for more than a dozen years. Craftmanship Spirit is our eternal belief.

ORGANIZATION STRUCTURE

组织架构



R&D TEAM

设计与研发



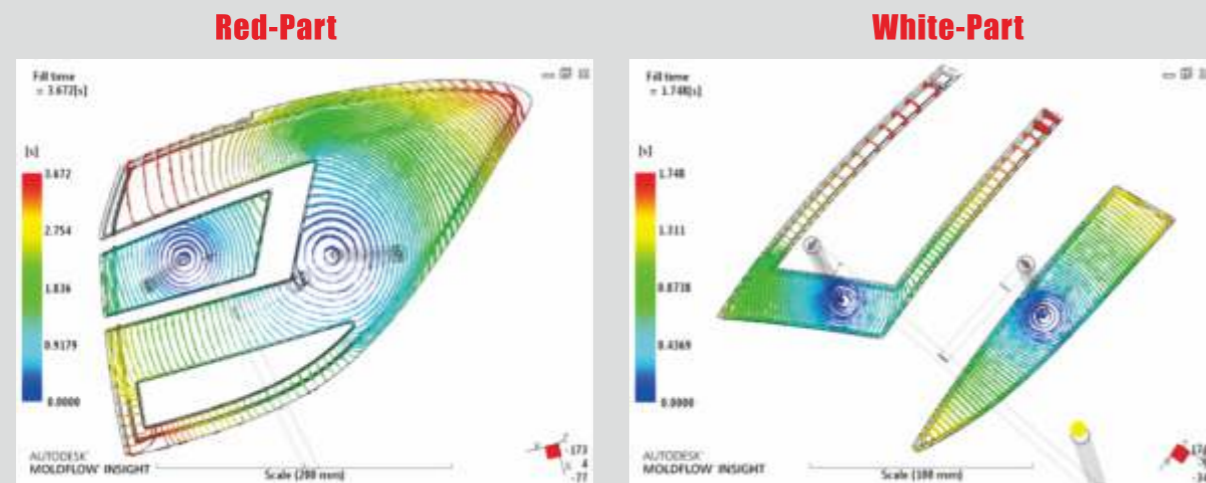
金祥晟的工程师设计经验丰富，具有综合开发理念。工程师们秉持“设计乃模具关键”之宗旨，非常重视模具制作工序。精心设计，力图打造具有使用年限最长、维修次数少的模具。产品工艺分析、模具数据分析、结构造型分析、冷却系统分析、模流成型分析，产品热流分析，技术与检测保障了模具的品质，从而获得客户的信任。

Our engineers have rich experience in design, also have comprehensive exploitation concept. Engineers uphold purpose of "design is the key to mould manufacture", attach great importance to mould Manufacturing. Well-designed, trying to build mould in possession of the longest working life and the least of maintenance frequency. Products analyzing process, analysis of mold data, structural shape analysis, cooling system analysis, mold flow analysis, product heat flow analysis, technology and testing support the high quality of mould, to win favor with the customer's trust.



双色车灯项目模流分析

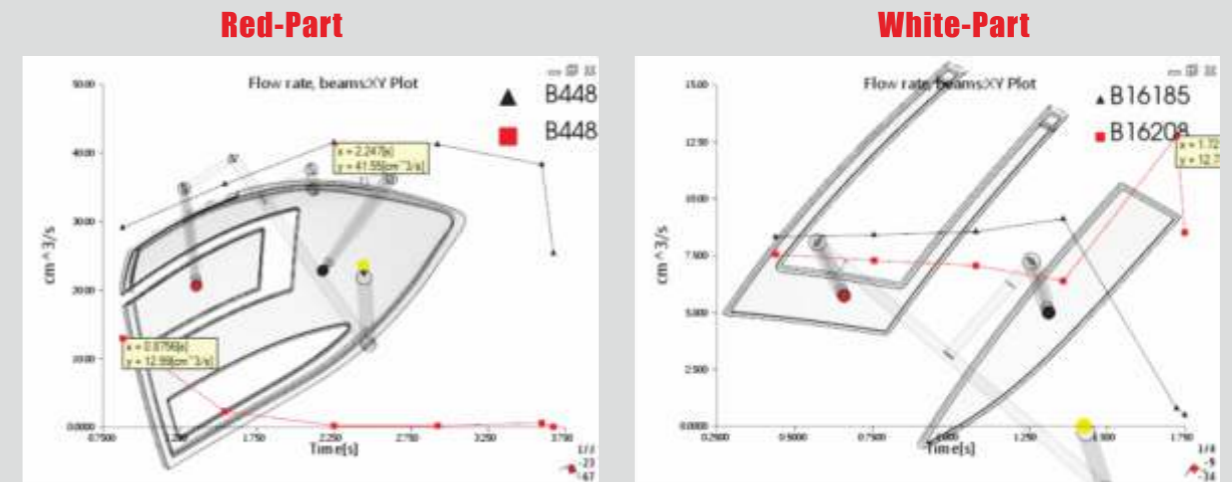
Filling Results 充填结果 - Fill time (contour) 充填时间(等值线)



Notes说明: The part will be filled without short shot. 产品充填无短射.

MATERIAL DATA 材料数据

Filling Results 充填结果 - Shear rate 剪切速率

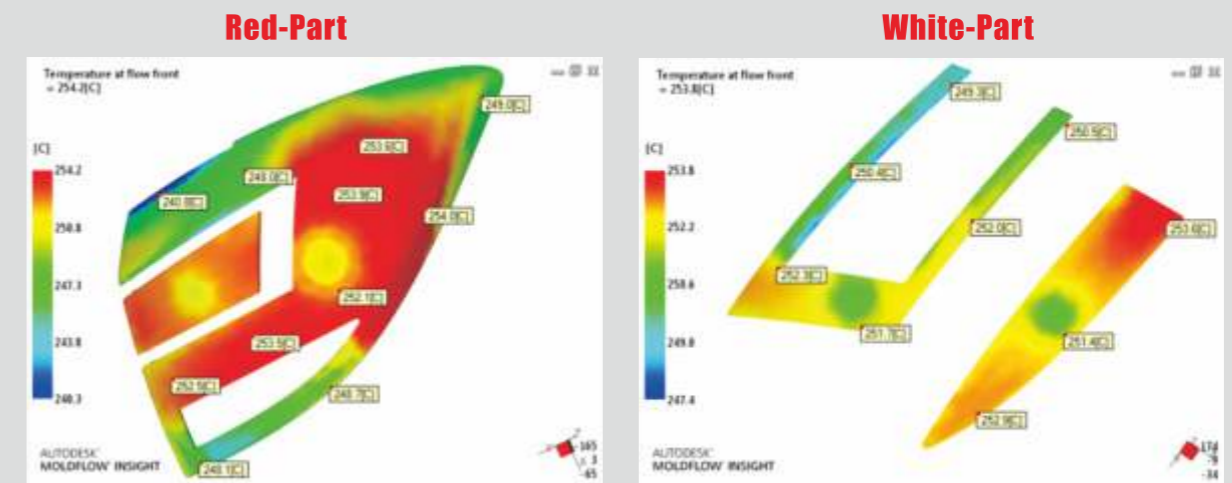


Notes说明: The max. shear rate value is 39767 1/s, which don't overcome the limit for the given material. 热浇口处的最大剪切速率是 39767 1/s, 均没有所给材料允许的最大剪切值.

Notes说明: The max. shear rate value is 38348 1/s, which don't overcome the limit for the given material. 热浇口处的最大剪切速率是 38348 1/s, 均没有所给材料允许的最大剪切值.

SYSTEM DETAILS AND GATING 系统详情及浇口

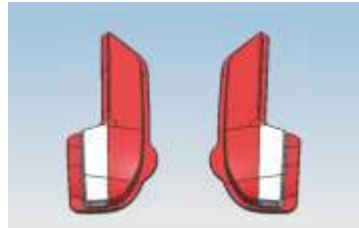
Filling Results 充填结果 - Temperature at flow front 流动前沿温度



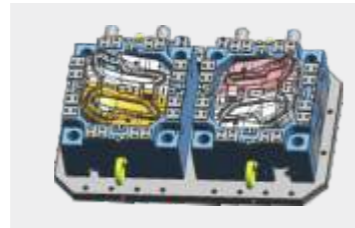
Notes说明: Temperature at flow front is homogeneous. 流体前沿温度均匀.

QUALITY CONTROL

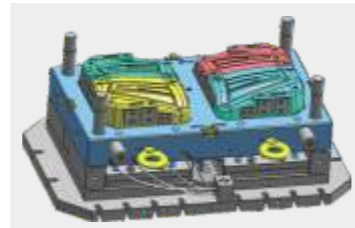
双色车灯模具项目流程与检测



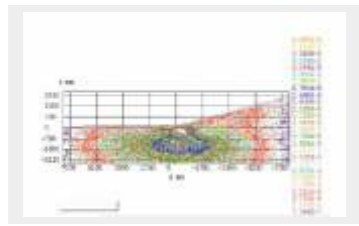
产品工艺分析
Products data analytics



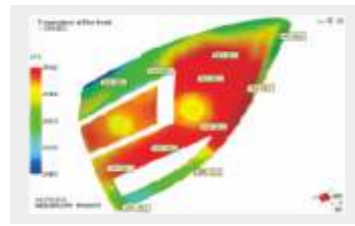
结构造型分析
Mould Structure Design



冷却系统分析
Cooling System Design



光型数据分析
Light data analytics



模流成型分析
Moldflow analytics



CNC机加工
CNC machining



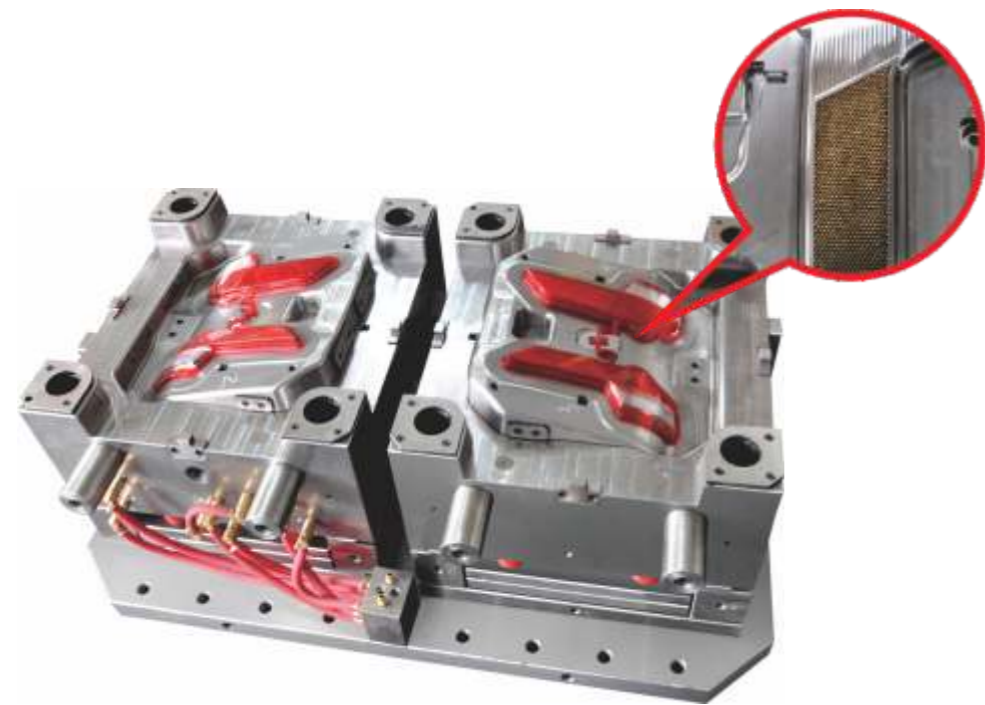
热流道加装
Hot Runner System



合模对碰
Die Spotting



试模
Mould trial



MOULD INSPECTION CHART

模具检验项目

Raw Material Test 模具原料检查	NDT Test 模料检验	Material Certificate 材质证明书	NDT Report 爆料探伤报告	Hardness & size Test Report 硬度、尺寸检测报告
	Standard Component 标准件检验	Hardness & size Test Report 硬度、尺寸检测报告		Operation Specifications 使用规格表及说明
	Mould Base Test 模架检验	Mould Base Report 标准模架检测报告		
	Mould Hotrunner Test 热流道检测	Hotrunner Purchasing Report 热流道购买品质保证书		
	Electrode Test 电极检测	Electrode Test Report 电极检测报告		
Process Inspection 过程检验	Test Each Machining (CNC, EDM, Polishing) 机加工工序检测 (加工中心、电火花等)		Process Test Report 过程检测报告	
	Heat Treatment Test 热处理检测	Quenching and High Temperature Tempering, Nitrogenation, Distressing, Queching, Nitrogen-carburization 调质、去应力、氮化、淬火、碳氮共渗		
	Assembly Process Test 装配工序检测	Inspection Report of Mould Accuracy 配模精度检测报告		
	Mould Testing 试模检测	Inspection Report of Mould Test 试模检测报告		
	Mould-Disassembly Test 拆模检测	Inspection Report of Mould-Disassembly Test 拆模检测报告		
Product Test 产品检测	FAI ALL Size Test FAI 全尺寸检测	CMM Test 三坐标检测中心	Inspection Report of Mould-Testing Samples 试模样件检测	
Delivery Inspection 出运检验	Mould Check (Appearance, Spare Parts, Manual, Etc.) 模具检验 (外观、备品、说明书等)		Shipment Check List 模具出运检查表	
	Packing Inspection (Manual, Size, Collocation, Etc.) 包装检验 (包装的材质、尺寸、配合等)		The Report of Packing 包装评审报告	

WORKSHOP & EQUIPMENT

车间设备



加工中心 CNC



电火花EDM



高速铣CNC



高速铣CNC



Sodick慢走丝



三坐标检测仪 CMM



合模机 Die Spotting Machine



加工中心CNC



EQUIPMENT LIST 设备列表

Equipment in Toolshop 模具加工车间					Equipment in Injection Shop 注塑成型车间			
Machine 设备名称	Speed(RPM) 速率	Quantity 数量	Accurate (mm) 精度	Stroke(mm) 尺寸	Machine 设备名称	Quantity 数量	Maxi Clamping Force	Maxi Injection Volume
CNC (海天)	6000RPM	1	0~0.02	2000*1500*900				
CNC (台湾高峰)	6000RPM	1	0~0.02	1500*800*900	Mono Color	1	800Ton	
CNC (台湾高峰)	10000RPM	1	0~0.01	1600*800*1100	Mono Color	1	800Ton	
CNC (台湾高峰)	6000RPM	1	0~0.01	1600*800*1100	Mono Color	1	320Ton	
CNC (台湾高峰)	6000RPM	1	0~0.02	1500*800*1100	BMC	1	500Ton	
CNC (台湾高峰)	10000RPM	1	0~0.02	1000*600*600	Bi Color	2	1000Ton	
高速 CNC (台湾快捷)	36000RPM	1	0~0.005	700*400*400				
高速 CNC (台湾快捷)	24000RPM	2	0~0.02	1600*1200*800				
4轴卧式CNC	10000RPM	1	0~0.01	1200*1100*1100				
石墨加工机	16000RPM	2	0~0.02	600*450*400				
中丝线割机		2	0~0.02	1200*600				
EDM		6	0.05-0.10	800*500				
双头 EDM		2	0~0.05	2500*1000				
CMM美国雷顿)		1	0-0.02					
2D 投影仪		1	0-0.02					
深孔钻		2	0-0.5	1000/15000				
合模机宁波顺兴		1		200 Ton /100Ton				
铣床		8	0-0.02	1200*600				
磨床		3	0-0.02					
车床		1	0-0.02					

SUPPLIER

供应商

MOULD COMPONENT SUPPLIERS (模具零件供应商)



STEEL SUPPLIERS (钢材供应商)



HOT RUNNER SYSTEM SUPPLIERS (热流道供应商)



COPARTNER

合作伙伴



规划中的金祥晟
The Planning of JinXiangSheng



企业愿景：成为一流的OEM汽车车灯模具供应商
Vision: Aimed to be a leading company of auto lamp mould supplier

质量管控：模具设计重在细节，优选配套供应商，内部流程紧紧把关
Quality Control: Mould design focus on details, optimizing matching suppliers and checking on strictly internal processes

企业文化：诚信、和谐、创新、卓越共赢
Corporate culture: Integrity, harmony, innovation and win-win

团队文化：工匠精神，责任意识
Team spirit: Craftmanship spirit, responsibility